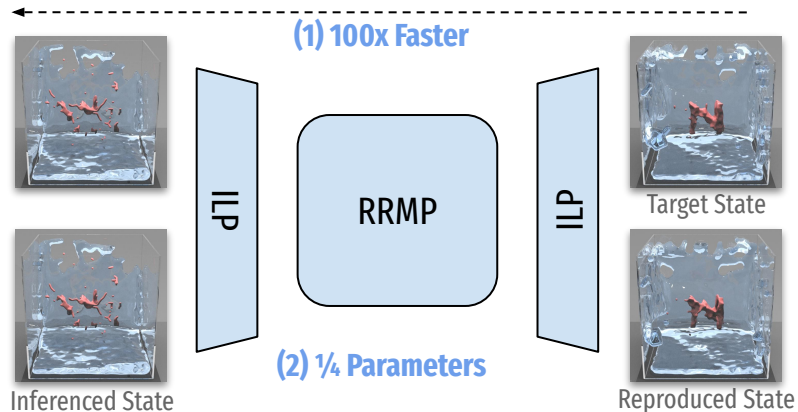


## *Inverse* Inference Plausible State



target shape

**N**

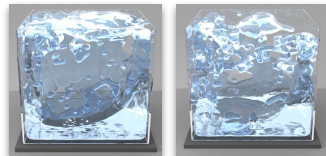
assign phys attribute

water environment

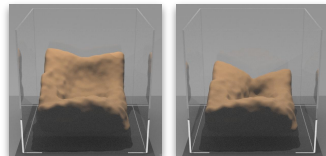
### (3) Consistency Goal Rollout



### (4) Accurate Simulation

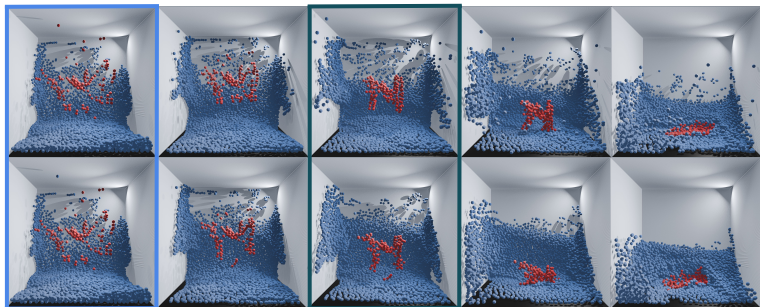


### (5) Versatile Fluids



## Regressive *Forward* Simulate

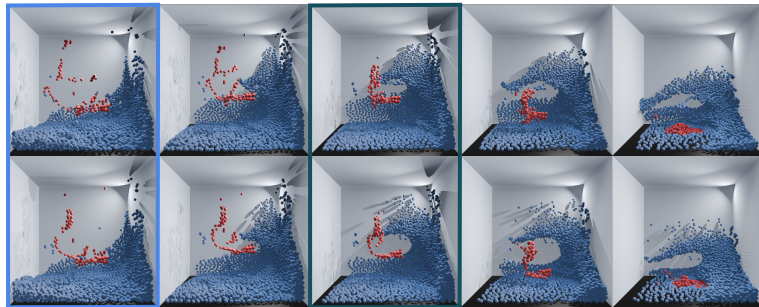
R-GNS



Inferred State

Reproduced State

Sep-GNS



Inferred State

Reproduced State